

Opportunity to Extend Saga House

Index, Intro

Index, Intro

Click Pic
2 go 2



a) The Original (1978) Saga House



b) As Is Now (2023) Saga House at Sagapor



c) Future Possibilities
1) Using Perm. Dev.



c) Future Possibilities
2) Extend by Application

At Sagapor

Leading to Improved Market Value

Index, Intro Opportunity to Extend Saga House at Sagapor

Various Options exist to extend this property which would improve its Market Value. To introduce these Options this internet display has been created. By way of introduction this Index page shows 3 subject picture buttons.

Clicking the first picture button will take you to a page showing information on

a) The Original (1978) Saga House

Clicking the Second picture button will take you to a page showing information on

b) As Is Now (2023) Saga House at Sagapor

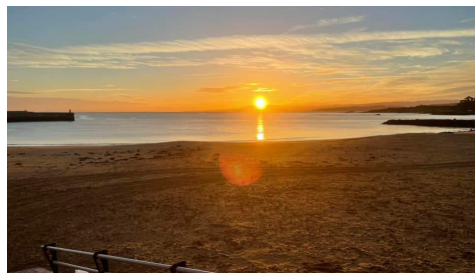
Clicking the first picture button will take you to a page showing information on

c) Future Possibilities 1) Using Perm. Dev. 2) Extend by Application

a) is shown to give the viewer an understanding of the house As Built in 1978. This shows/describes its original status without any extension as a 4 bedroom detached house with integral garage.

b) is shown to give the viewer an understanding of the house As Is now. This shows/describes its current status with an extension of a double garage, front and rear Conservatories and the original integral garage converted to an Office and Utility Rooms.

c) is shown to give the viewer an understanding of the house As Is now extended to convert it to 1) as PD and 2) After a successful Application for semi detached houses.



The Oysterbeds at the end of the road at sunset

Indicates This Button

Opportunity to Extend Saga House

Index, Intro

Index, Intro

Click Pic 2 go 2



a) The Original (1978) Saga House



b) As Is Now (2023) Saga House at Sagapor



c) Future Possibilities 1) Using Perm. Dev.



c) Future Possibilities 2) Extend by Application

At Sagapor Leading to Improved Market Value

a) The original Saga House was built in 1978. The house is located on Hayling Island close to the Oyster Beds Nature Reserve and opposite un developed horse grazing fields.

Pic. a) 1 A View of The Oyster Beds
Pic. a) 2 Horses Grazing in Field (opposite). The outlines of the house as built, below

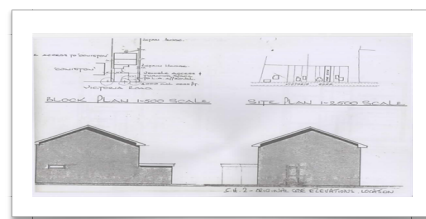
Pic. a) 3 The Original Front and Rear Elevations.
Pic. a) 4 The Original Side Elevation.
Pic. a) 5 The Original Floor Plans.
Pic. a) 6 The Original Sectional Elevations.



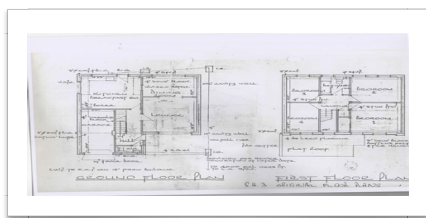
sunset over the Oyster Beds



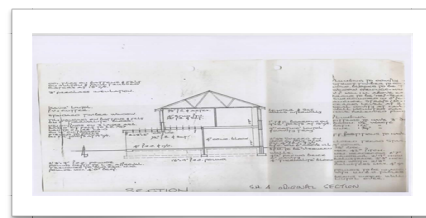
Pic a) 3 The Original Front and Rear Elevations.



Pic a) 4 The Original Sectional Side Elevations



Pic a) 5 The Original Floor Plans



Pic a) 6 The Original Side Elevations

Click Button for INDEX

Indicates This Button

Saga House Opportunity to Extend

**Index,
Intro**

Index, Intro

Click Pic
2 go 2



**a) The Original
(1978)
Saga House**



**b) As Is Now
(2023)
Saga House at
Sagapor**



**c) Future
Possibilities
1) Using Perm.
Dev.**



**c) Future
Possibilities
2) Extend by
Application**

At Sagapor

Leading to Improved Market Value

b) The House as is Now

The pictures show the house "as is now". The Land Area of Saga House has been extended and a Double Garage and Conservatories added.

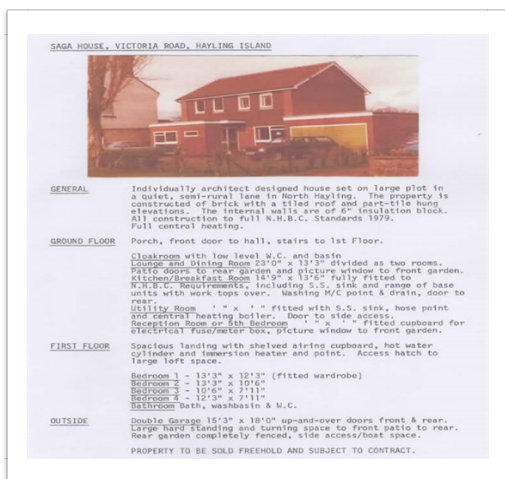
Pic. b) 1 The Existing House Front View

Pic. b) 2 Agents Description.

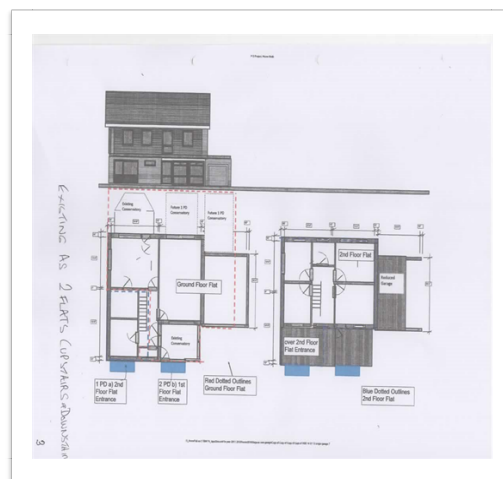
Pic. b) 3 Plan and Elevations with Double Garage and Front and Rear Conservatories



Pic b) 1 The Existing House Front View



Pic. b) 2 Agents Description.



Pic. b) 3 Plan and Elevations with Double Garage and Conservatories

Click Button for INDEX

Indicates This Button

Opportunity to Extend Saga House

Index, Intro

Index, Intro

Click Pic 2 go 2



a) The Original (1978) Saga House



b) As Is Now (2023) Saga House at Sagapor



c) Future Possibilities 1) Using Perm. Dev.



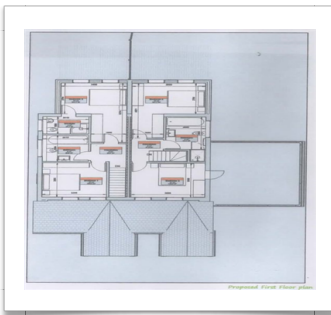
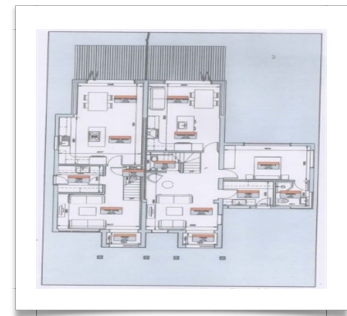
c) Future Possibilities 2) Extend by Application

At Sagapor Leading to Improved Market Value

c) Future Possibilities 1) Using Perm. Dev. 2) Extend by Application

Section C) looks to Future Possibilities that could add value to the Existing Property. C) 1 Deals with its conversion to 2 Semidetached Houses converted as a PDR, using Permanent Development Rules.

C) 2 (next Page) Deals with its conversion to a Terrace of 3 Attached Houses converted that might be achieved after planning.



Pic. c) 1 Elevations. Pic. c) 2 Aerial View Pic. c) 3 Ground Floor Plan.
Pic. c) 4 Upper Floor Plan.. Pic c) 5 Front Views c) 6 Possible Granny Annex

Click Button for INDEX

Indicates This Button

Opportunity to Extend Saga House

Index, Intro

Index, Intro

Click Pic 2 go 2



a) The Original (1978) Saga House



b) As Is Now (2023) Saga House at Sagapor



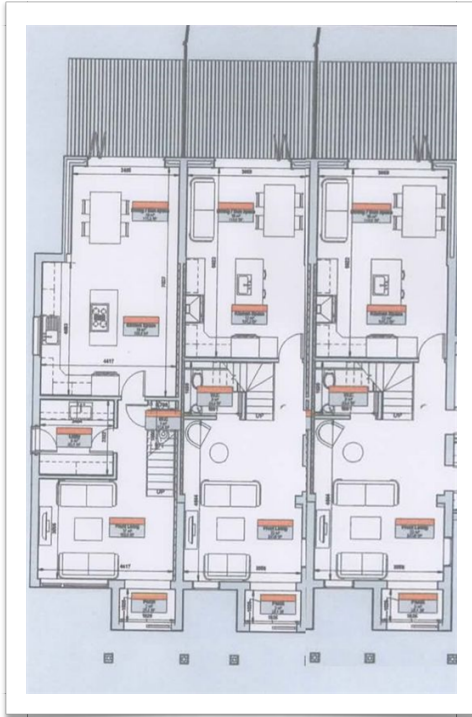
c) Future Possibilities 1) Using Perm. Dev.



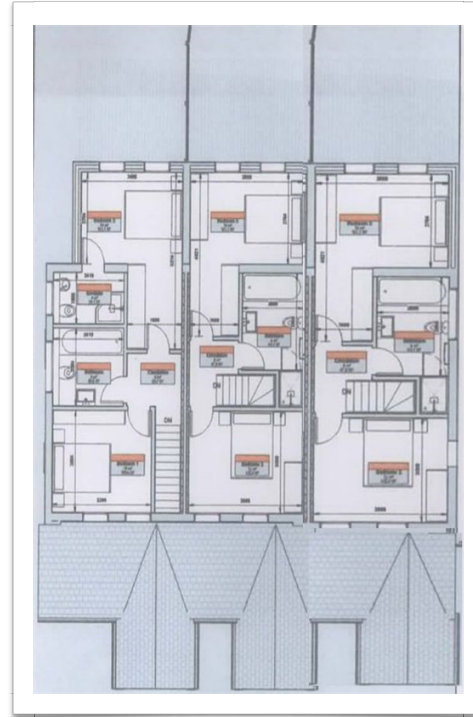
c) Future Possibilities 2) Extend by Application

At Sagapor Leading to Improved Market Value

c) Future Possibilities 2) Extend by Application



Pic. a) 7 Terrace Ground Floor Floor.



Pic. a) 8 Terrace Upper Floor

Requires Planning Application

Click Button for INDEX

Indicates This Button